



Hayman 280 - On Display
Brookhaven Estate





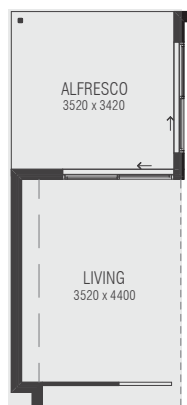
Hayman 280



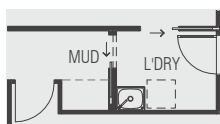
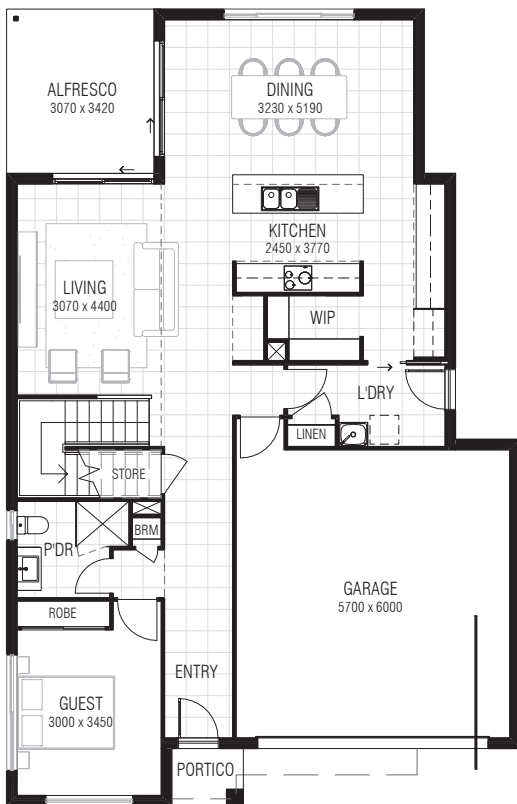
Montauk Facade on Display

Learn more...

View more of our Hayman 280 display home on our website, including a virtual walkthrough, video and imagery, and a room by room breakdown with all of the standard inclusions and upgrade items.



DESIGN OPTION
LIVING OPTION
(ON DISPLAY)



DESIGN OPTION
MUDROOM IN LIEU OF LINEN
(ON DISPLAY)



WIDTH 10700mm
 LENGTH 16600mm
 GARAGE 37.10m²
 GROUND FLOOR 107.00m²
 ALFRESCO 10.50m²
 PORTICO 1.80m²
 FIRST FLOOR 104.90m²
 VOID 19.60m²
TOTAL 280.90m²

Phone: 07 3368 2016 **Email:** info@dcliving.com.au
QBCC: 1314299 **dcliving.com.au**

DISCLAIMER: Please note this work is for marketing purposes and should be used as a guide only. Floor plans are not to scale and reflect the standard facade. Images and renders contained in this document are based on a 12.5m frontage and are for illustrative purposes only, conceptual, contain non-standard items and are subject to change. Alternative garage doors, front doors, paint colours and locations are indicative only and subject to change. ABN 62 605 113 773. DC Living Pty Ltd. QBCC 1314299

DC LIVING

